

West Portion of Northeast Trask Controlled Elk Hunt Extended Boundary for 2014

●●●●● Hunt Area Boundary

BLM Land
 USFS Land
 ODF Land
 Private Land



1 inch = 2 miles

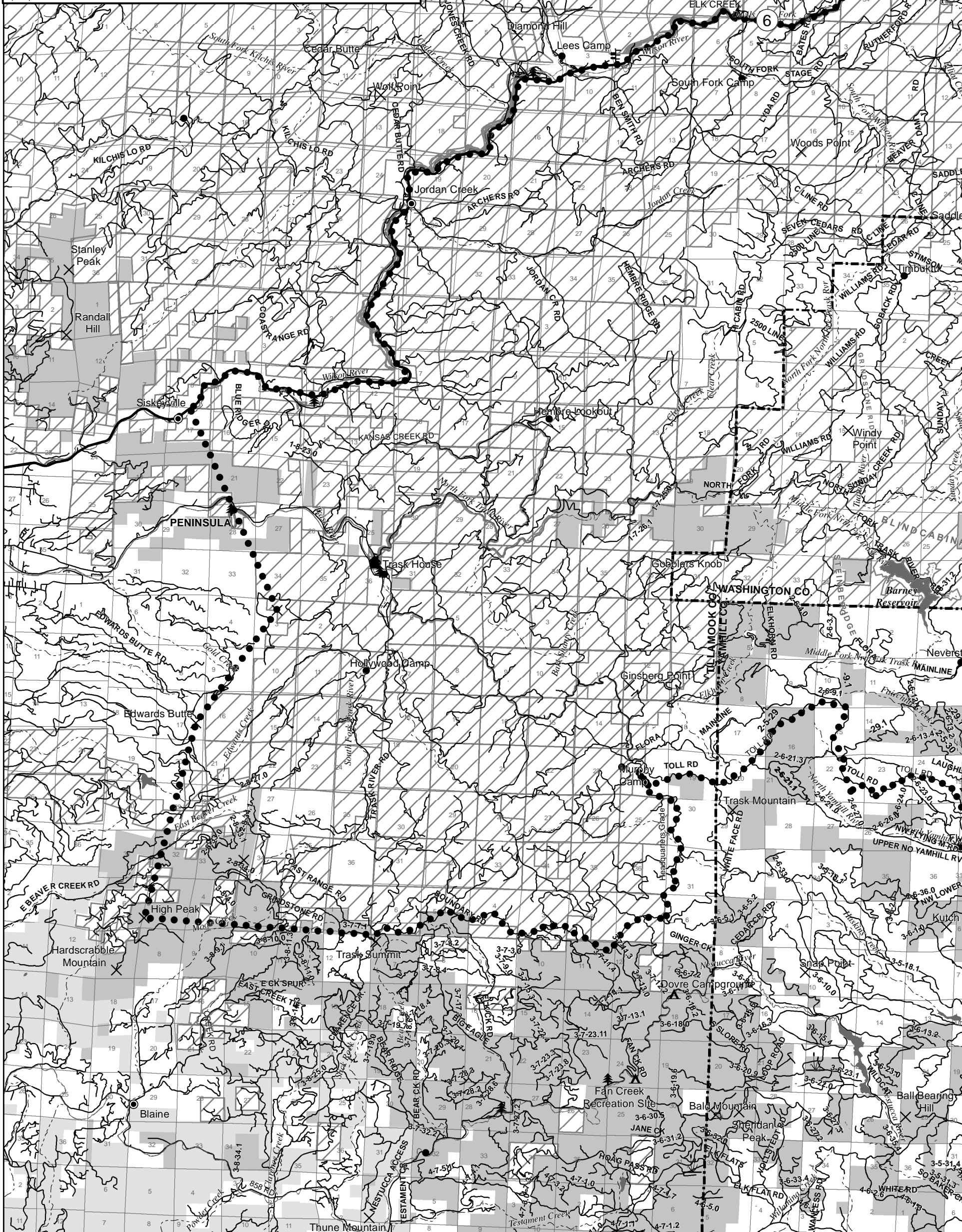
This product is for informational purposes and may not have been prepared for, or be suitable for legal, engineering, or surveying purposes. Users of this information should review or consult the primary data and information sources to ascertain the usability of this information.

SEE OREGON BIG GAME REGULATIONS FOR LEGAL HUNT DESCRIPTIONS

Oregon Department of Fish and Wildlife
4034 Fairview Industrial Drive SE
Salem, OR 97302
(503) 947-6000



revised 02/2014



T. 3 N
T. 2 N
T. 1 N
T. 1 S
T. 2 S
T. 3 S
T. 4 S

East Portion of Northeast Trask Controlled Elk Hunt Extended Boundary for 2014

●●●●● Hunt Area Boundary

■ BLM Land

■ USFS Land

▨ ODF Land

□ Private Land

1 inch = 2 miles



This product is for informational purposes and may not have been prepared for, or be suitable for legal, engineering, or surveying purposes. Users of this information should review or consult the primary data and information sources to ascertain the usability of this information.

SEE OREGON BIG GAME REGULATIONS FOR LEGAL HUNT DESCRIPTIONS

Oregon Department of Fish and Wildlife
4034 Fairview Industrial Drive SE
Salem, OR 97302
(503) 947-6000



revised 02/2014

